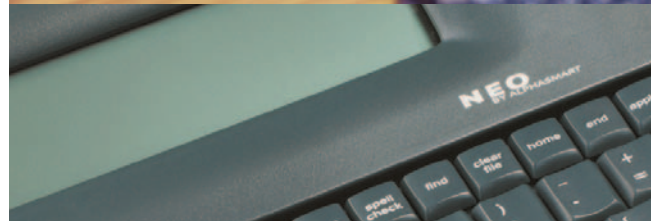
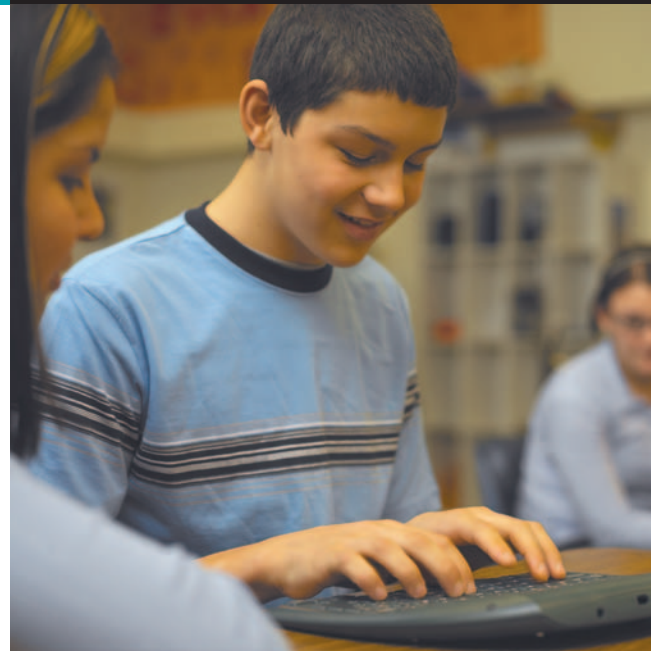


A full-featured word processor that streamlines the writing process and supports high-quality writing

- Thesaurus provides synonym and antonym lookup to build vocabulary for more precise communication of thoughts.
- Save files by name so users can store more files (in addition to the eight active files), and better organize and access their data.
- User dictionary lets writers add scientific terms, proper names, acronyms, or curriculum-specific words for more efficient spell checking.
- Linked files with teacher-specified rubrics, homework instructions, or reference materials generate onscreen checklists to guide students through assignments.
- Find-and-replace all occurrences of a word or phrase to streamline revision of files.
- Spanish-English word lookup helps ESL students improve their language proficiency.
- Increased maximum file size supports advanced writing projects.
- Built-in help system conveniently displays all keyboard commands to bring new users up to speed quickly.



AlphaWord Plus SmartApplet expands the word processing functionality of the AlphaSmart 3000 to help take anyone's writing to new levels. It expedites routine writing and editing tasks so users can concentrate on the more productive aspects of the writing process. Writers can also now more easily organize and access their work. AlphaWord Plus even helps the novice writer develop vocabulary, increase clarity of expression, and build writing proficiency.

With AlphaWord Plus SmartApplet, users upgrade the writing capabilities of the AlphaSmart 3000 and get more out of their technology investment.

System Requirements

Installation and management require Macintosh OS 9.0 or later, or Windows 98SE or later.

AlphaWord Plus SmartApplet runs on both AlphaSmart 3000 and Neo by AlphaSmart, and comes preinstalled on Neo (no additional purchase required).

```
Select a file to open      (esc to exit)
-*[F7] Journal
-[F8] American History
-Biology report_
```

Named files allow users to keep more of their work on the device.

```
Select a category and press enter or
-----"move"-----|A=antonyms
_ act(v)      - move(v)      |H=help
- carry(v)    - motivate(v) |esc=exit
```

Thesaurus displays a list of synonyms and antonyms to help improve writing accuracy.

```
Complete each step:
[ ] Choose a setting
[ ] Choose characters
[ ] Choose a plot
```

Linked files generate onscreen checklists or display reference material to guide students through assignments.

```
Find: [cougar          ]
Replace with: [mountain lion_]
(*)whole word( )match case( )replace all
           (enter=begin, cmd-H=help, esc=exit)
```

Find-and-replace facilitates quick file revisions.

```
Select help topic:      (esc=exit)
- Features              - Settings/Status
- Navigating            - Editing
- International        - Symbols/Greek
```

Built-in help provides convenient reference to keyboard commands.

AlphaSmart, Inc.
973 University Avenue
Los Gatos, CA 95032

408-355-1000
888-274-0680 (toll-free)

www.alphasmart.com

©2004 AlphaSmart, Inc. AlphaSmart and SmartApplet are registered trademarks, and AlphaWord is a trademark of AlphaSmart, Inc.

49-0011-040526